

NORaX

APPLICATION GUIDE



ENGINEERED ABRASIVE SOLUTIONS
FOR POLISHING APPLICATIONS

- LONGER LIFE
- ABILITY TO SKIP FINISHING STEPS
- FASTER CUT RATES
- HIGHER QUALITY FINISHES

FOR INTERNAL USE ONLY



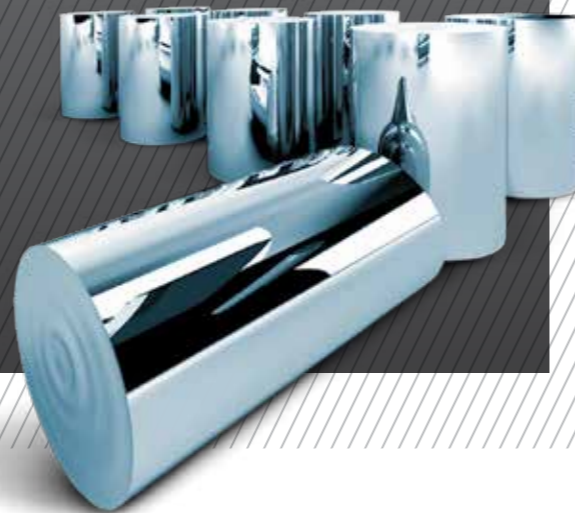
NORTON
SAINT-GOBAIN®

NORaX®

PRODUCT AVAILABILITY

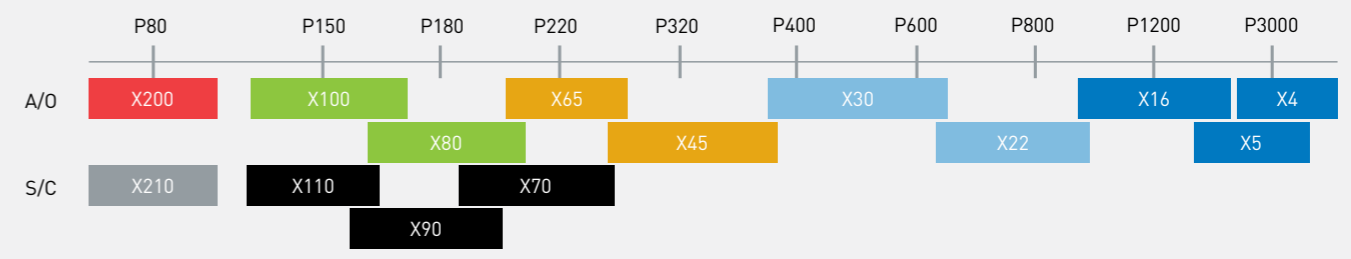
Multiple abrasives layers with an engineered pattern provide superior, consistent finishes on all types of materials: specialty metals, composites, and glass. Longer product life, higher quality finishes, faster cut rates, and the ability to skip steps drive down your finishing costs.

ENGINEERED ABRASIVE SOLUTIONS FOR POLISHING APPLICATIONS; OUTLAST CONVENTIONAL ABRASIVES WITH 2-5x LONGER LIFE.



USAGE	BACKING		GRAIN	CAP CODE	RECOMMENDED PRESSURE	GRIT OFFERING											
	Weight	Flexibility				X210	X110	X90	X80	X65	X45	X30	X22	X16	X10	X9	
DRY	J-wt.	High	A/O	U243	Low (1-8psi)				X80	X65	X45	X30	X22	X16			
	X-wt.	Medium	A/O	U234	High (15+psi)		X100	X80	X65	X45	X30			X16			
	X-wt.	Medium	A/O	U254	Low (1-8psi)		X100	X80	X65	X45	X30	X22	X16			X5	
	X-wt.	Medium	A/O	U264	Medium (8-15psi)	X200	X100	X80	X65	X45	X30	X22	X16			X5	
	X-wt.	Medium	S/C	U464	Medium (8-15psi)		X110	X90	X70								
WET	B-wt. Paper		A/O	U381							X35			X10			
	Y-wt.	Low	A/O	U336	High (15+psi)				X65	X45	X30	X22	X16			X5	
	Y-wt.	Low	A/O	U366	Medium (8-15psi)		X100		X65	X45	X30	X22	X16			X5	
	Y-wt.	Low	S/C	U466	Medium (8-15psi)	X210	X110	X90	X70								
	Y-wt.	Low	Ceramic	U936	High (15+psi)	X200	X100		X65	X45	X30			X16		X9	

FEPA GRADING SYSTEM

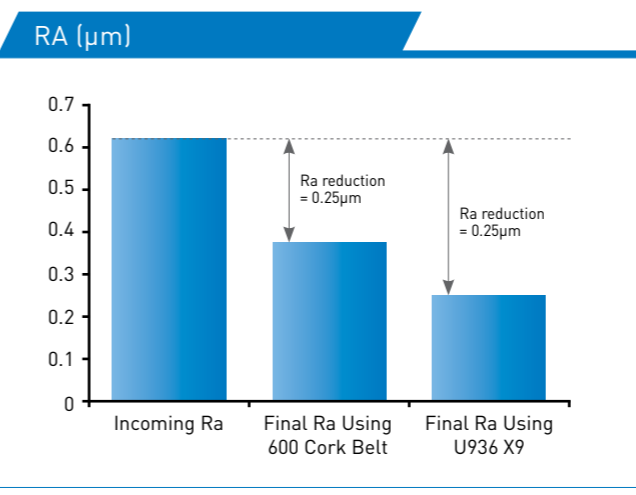


NORaX GRADING SYSTEM

Engineered abrasives perform over a wider range of traditional grit sequences.

PRODUCT SELECTION BY MACHINE/MATERIAL

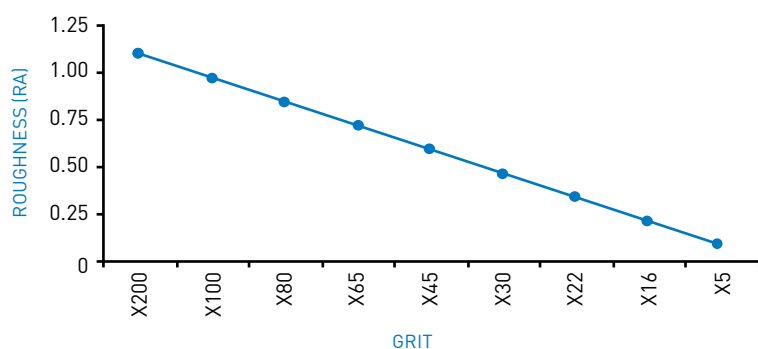
MATERIAL/MACHINE TYPE	RECOMMENDED SPECIFICATION	ROBOTIC	PORTABLE FILE BELT	PNEUMATIC DRUM	ROLL GRINDER			STROKE SANDER	PLATEN SANDER	BACK-STAND	CENTERLESS		
					Slack	Dry	Wet				Slack	Dry	Wet
CARBON STEEL	Starting Spec	U243	U936	U243	U254	U336	U936	U243	U264	U243	U254	U936	U936
	Optional Spec	U264	U336	U264	U243	U234	U336	U264		U264		U336	U336
STAINLESS STEEL	Starting Spec	U243	U936	U243	U254	U336	U936	U243	U264	U243	U254	U936	U936
	Optional Spec	U264	U336	U264	U243	U234	U336	U264		U264		U336	U336
CHROME	Starting Spec	U243	U936	U243	U254		U936	U243	U264	U243	U254	U936	U936
	Optional Spec	U264	U336	U264	U243		U336	U264		U264		U336	U336
COBALT CHROME	Starting Spec	U243	U936	U243	U254		U936	U243	U264	U243	U254	U936	U936
	Optional Spec	U264	U336	U264	U243		U336	U264		U264		U336	U336
GRAPHITE	Starting Spec	U366	U366	U366	U366			U366	U366	U366	U366	U366	U366
NICKEL	Starting Spec	U243	U936	U243	U254		U936	U243	U264	U243	U254	U936	U936
	Optional Spec	U264	U336	U264	U243		U336	U264		U264		U336	U336
TITANIUM	Starting Spec	U464	U464	U464	U464		U466	U464	U464	U464	U464		U466
CERAMIC	Starting Spec		U464	U464	U464	U464	U466	U464	U464	U464	U464		U466
GLASS	Starting Spec		U464	U464	U464	U464	U466	U464	U464	U464	U464		U466



CROSS REFERENCE GUIDE

TRIZACT CAP CODE	TRIZACT AVAILABILITY	RECOMMENDED NORaX CAP CODE	NORaX AVAILABILITY	KEY MARKETS
217EA	J-wt. A6-A100	U243	J-wt. X16-X80	Medical, Plate/Polish
237AA	X-wt. A6-A160	U264/U254	X-wt. X5-X200	Medical, Plate/Polish
253FA	X-wt. A6-A100	U336/U366	Y-wt. X5-X100	Centerless
268XA	3-mil film disc A5-A35	U381	B-wt. paper X10-X35	Composites
272LA	5-mil film belt A5-A35	Consult PM		Auto Parts
305EA	J-wt. A3-A5	U254	X-wt. X5	Golf
307EA	J-wt. A6-A100	U243/U254	X-wt./J-wt. X5-X100	Medical, Plate/Polish
310EA	J-wt. A5-A45	U243/U254	X-wt./J-wt. X5-X100	Medical, Plate/Polish
327DC	X-wt. Trizact CF A30-A300	U254	X-wt. X5-X100	Turbine Blades
337DC	X-wt. Trizact CF A30-A300	U264	X-wt. X5-X200	Turbine Blades
347AC	X-wt. Trizact CF A30-A300	U234	X-wt. X16-X100	Turbine Blades
363FC	X-wt. A35-A300	U936	Y-wt. X9-X200	Centerless
407EA	J-wt. A20-A110	U464	X-wt. X70-X110	Nonferrous Materials (dry)
443SA	Foam-backed disc P800-P5000	Consult PM		AA Clear Coat
463FC	X-wt. A35-A300	U466	Y-wt. X70-X210	Nonferrous Materials (wet)
466LA	3-mil film disc A3, A5, and A7	Consult PM		Prime Automotive Clear Coat
568XA	3-mil disc CeO2	Consult PM		Glass Polishing
661XA	Diamond film 0.5, 2, and 9µm	Consult PM		Electronics
663FC	X-wt. 20, 40, and 70 microns	Consult PM		Roll Grinding
677XA	Diamond tile 3, 6, and 9µm	Consult PM		Electronics
953/963FA	Y-wt. A6-A500	U936	Y-wt. X9-X200	Centerless

AVERAGE FINISH (Ra)



www.norton.eu

Saint-Gobain Abrasives
 European Headquarters
 Rue de l'Ambassadeur - B.P.8
 F78702 Conflans-Saint-Honorine
 France

Tel: +33 (0) 134 90 40 00
 Fax: +33 (0) 139 19 89 56

Norton is a registered trademark of Saint-Gobain Abrasives.
 Form # 2302